

## TGFβR2/ TGFBR2, Human, Recombinant

货号：PCK094

### 产品信息

别名	TGF-beta Receptor type-2; TGF-beta type II Receptor; TGFBR2; Transforming Growth Factor-beta Receptor type II
物种	Human
表达宿主	Human Cells
序列信息	Thr23-Asp159
检索号	P37173
分子量	42.6 kDa
标签	C-Fc
生物活性	Measured by its ability to inhibit TGF-beta 1 activity on TF-1 human erythroleukemic cells. The ED50 for this effect is 18.41 ng/ml in the presence of 100pg/ml of recombinant human TGF-beta 1.

### 产品特性

纯度	>95% as determined by reducing SDS-PAGE.
内毒素	< 1.0 EU per µg as determined by LAL test.
保存	Lyophilized protein should be stored at -5~-20°C, stable for one year after receipt. Reconstituted protein solution can be stored at 2-8°C for 2-7 days. Aliquots of reconstituted samples are stable at -5~-20°C for 3 months.
运输	Ambient temperature or ice pack.
制剂	Lyophilized from a 0.2 µm filtered solution of 20mM PB, 150mM NaCl, pH7.2.



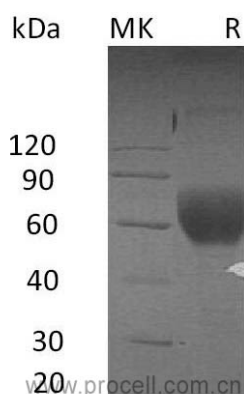
## 复融

Always centrifuge tubes before opening. Do not mix by vortex or pipetting. It is not recommended to reconstitute to a concentration less than 100 µg/ml. Dissolve the lyophilized protein in distilled water. Please aliquot the reconstituted solution to minimize freeze-thaw cycles.

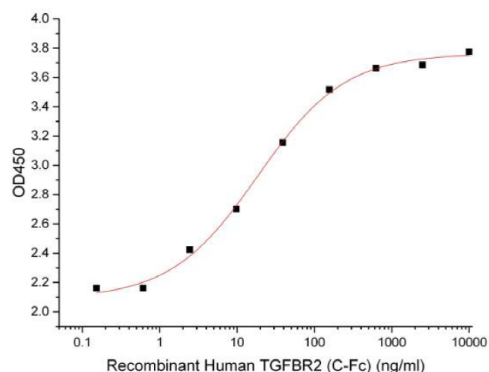
## 背景介绍

TGFBR2 is a single-pass type I membrane Protein and contains one Protein kinase domain. TGFBR2 exists as a heterodimeric complex with another Receptor Protein and binds TGF-beta. Signals triggered through the TGF-beta Receptor complex prompt various responses by the cell. One such response is to inhibit cell growth and division. Based on this action, the TGF-beta Receptor type 2 is sometimes called a tumor suppressor. Defects in TGFBR2 have been associated with Marfan syndrome, Loeys-Deitz aortic aneurysm syndrome, Osler-Weber-Rendu syndrome and the development of various types of tumors.

## SDS-PAGE



## 生物活性



Measured by its ability to inhibit TGF-beta 1 activity on TF-1 human erythroleukemic cells. The ED50 for this effect is 18.41 ng/ml in the presence of 100pg/ml of recombinant human TGF-beta 1.

