

IL-2RB/ CD122 (C-6His), Human, Recombinant

货号 : PCK151

产品信息

别名	Interleukin-2 Receptor subunit beta; IL2RB; IL-2 Receptor subunit beta; IL-2R subunit beta; High affinity IL-2 Receptor subunit beta; CD122
物种	Human
表达宿主	Human Cells
序列信息	Ala27-Asp239
检索号	P14784
分子量	25.6 kDa
标签	C-6His
生物活性	Loaded Human IL-2RB-His on HIS1K Biosensor, can bind Human IL-2 with an affinity constant of 0.27 uM as determined in BLI assay.

产品特性

纯度	>95% as determined by reducing SDS-PAGE.
内毒素	< 1.0 EU per µg as determined by LAL test.
保存	Lyophilized protein should be stored at -5~-20°C, stable for one year after receipt. Reconstituted protein solution can be stored at 2-8°C for 2-7 days. Aliquots of reconstituted samples are stable at -5~-20°C for 3 months.
运输	Ambient temperature or ice pack.
制剂	Lyophilized from a 0.2 µm filtered solution of PBS, pH7.4.



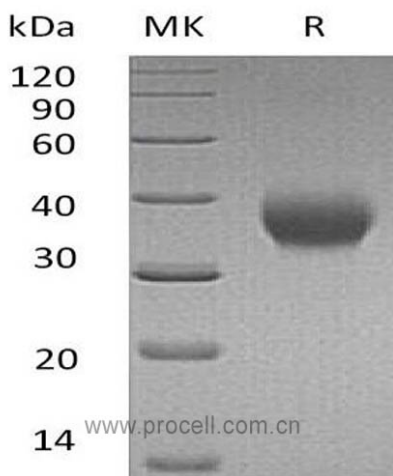
复融

Always centrifuge tubes before opening. Do not mix by vortex or pipetting. It is not recommended to reconstitute to a concentration less than 100 µg/ml. Dissolve the lyophilized protein in distilled water. Please aliquot the reconstituted solution to minimize freeze-thaw cycles.

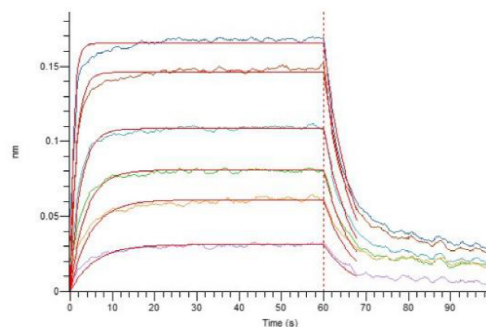
背景介绍

Human IL-2RB, also known as Interleukin-2 Receptor subunit beta, is the Receptor for Interleukin-2. IL2 Receptor complex is involved in Receptor mediated endocytosis and transduces the mitogenic signals of IL2. IL2 Receptor complex has three forms with respect to ability to bind IL2. IL-2RB is belonged to a type I membrane Protein, and has a 26 residue signal peptide, a 214 residue extracellular region, a 25 residue transmembrane region and a 286 residue cytoplasmic domain. IL-2RB is the subunit critical for Receptor-mediated signaling via physically or functionally coupling to other signaling molecules, such as the Jak-STAT and Src-family Protein tyrosine kinase although it lacks apparent catalytic Motifs.

SDS-PAGE



生物活性



Loaded Human IL-2RB-His on HIS1K Biosensor, can bind Human IL-2 with an affinity constant of 0.27 uM as determined in BLI assay.

