

## IL-15RA/ CD215 (C-Fc), Human, Recombinant

货号 : PCK149

### 产品信息

别名	CD215; IL15RA; CD215 antigen; IL-15 Receptor subunit alpha; IL-15RA; IL-15R-alpha; Interleukin 15 Receptor; alpha; Interleukin-15 Receptor subunit alpha; MGC104179
物种	Human
表达宿主	Human Cells
序列信息	Ile31-Thr172
检索号	Q13261-3
分子量	42.2 kDa
标签	C-Fc
生物活性	Measured by its ability to block human IL-15-induced proliferation of CTLL-2 mouse cytotoxic T cells. The ED50 for this effect is 0.35-3.5 ng/ml.

### 产品特性

纯度	>95% as determined by reducing SDS-PAGE.
内毒素	< 1.0 EU per µg as determined by LAL test.
保存	Lyophilized protein should be stored at -5~-20°C, stable for one year after receipt. Reconstituted protein solution can be stored at 2-8°C for 2-7 days. Aliquots of reconstituted samples are stable at -5~-20°C for 3 months.
运输	Ambient temperature or ice pack.
制剂	Lyophilized from a 0.2 µm filtered solution of 20mM PB, 150mM NaCl, pH 7.4.



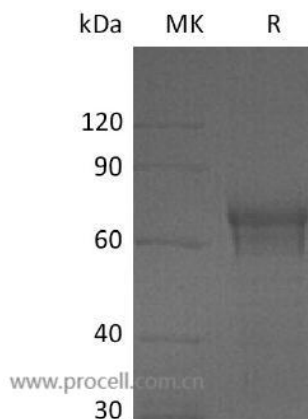
## 复融

Always centrifuge tubes before opening. Do not mix by vortex or pipetting. It is not recommended to reconstitute to a concentration less than 100 µg/ml. Dissolve the lyophilized protein in distilled water. Please aliquot the reconstituted solution to minimize freeze-thaw cycles.

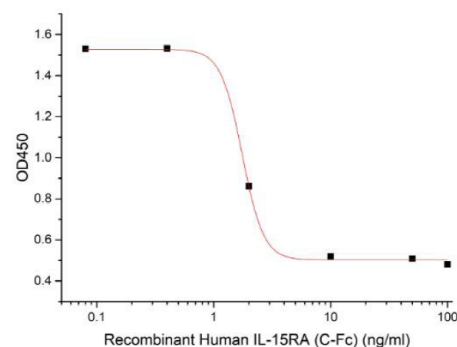
## 背景介绍

Interleukin 15 Receptor alpha (IL-15R $\alpha$ ) is a transmembrane glyco Protein that plays a pleiotropic role in immune development and function, including the positive maintenance of lymphocyte homeostasis. IL-15R $\alpha$  chain can bind soluble IL-15 and “transpresent” Cytokine to the cells, allowing them to respond to IL-15. Soluble IL-15R $\alpha$  can function as a specific high-affinity IL-15 antagonist. The soluble IL-15/ IL-15R $\alpha$  complexes exhibit a strong agonistic activity which is mediated through membrane-bound IL-15 Receptor  $\beta$  and  $\gamma$  heterodimers and enables signaling to cells.

## SDS-PAGE



## 生物活性



Measured by its ability to block human IL-15-induced proliferation of CTLL-2 mouse cytotoxic T cells. The ED50 for this effect is 0.35-3.5 ng/ml.

